



Visual Teamwork

Three Worlds
in one Application

research and teaching



Weilgut MindPlan

Visual Teamwork

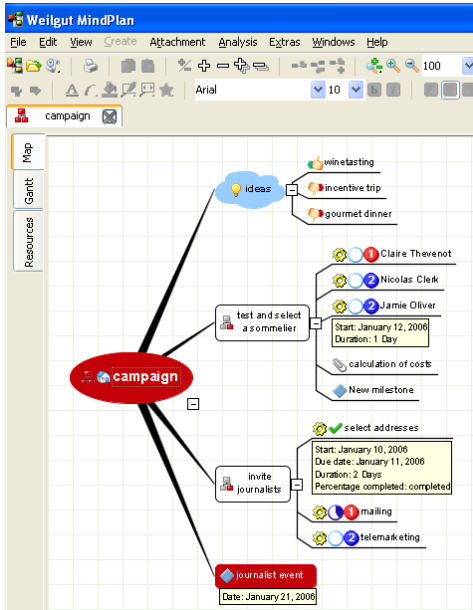
A picture says more than a thousand words
Visualize your ideas, plans, concepts, events, meetings, etc. with MindPlan Map-Editor.

Visualize Teamwork

Use the mapping-method for your personal brainstorming and the visual exchange of ideas. Share your ideas with your team, customers, partners and suppliers. Collaborate with all stakeholders on your concepts in real-time!

Use the MindPlan Map-Editor for the conception or import your maps from your favourite application.

Enhance the value of your MindPlan nodes by integrating any kind of files, Lotus-Notes or internet shortcuts to make them available to all stakeholders.

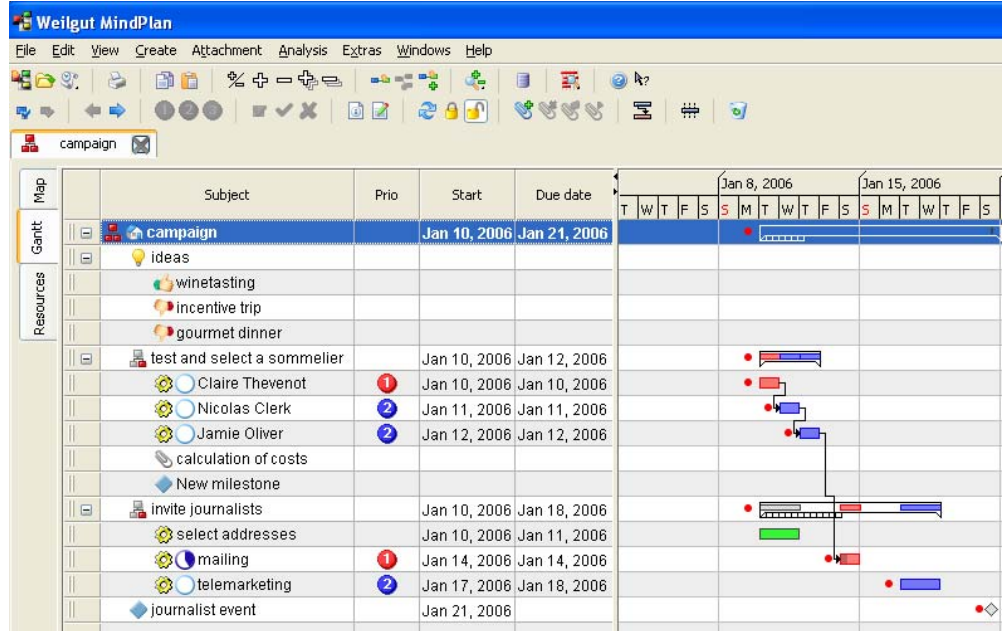


MindPlan Map-Editor

Plan Tasks, Schedules and Resources

Plan your concepts whenever you want - before, while or after you capture your ideas. MindPlan Gantt-Editor is the right tool.

MindPlan Gantt-Editor helps you to map tasks, schedules/deadlines, resources and their timely interactions during the operational as well as the feedback phase. The hierarchical structure of the



MindPlan Gantt-Editor

map-view is enriched with the task data of the nodes and presented as a Gantt chart. A data conversion will not be performed, because it is only a different view on the same basic data (the nodes).

Consequently, all changes within the Gantt will have a direct impact on the presentation within the map. This enables you to switch between both views as you like.

Using this method, a map does not end at a presentation level, but will be developed continuously during a complete planning process. You can even configure further views according to your needs. This enables you to generate analytical reports, e.g. of certain resources, projects and pending activities.

Coordinate Resources and Record Processes

You can enter project-phases, activities, milestones and resources for each node using the Gantt-editor. The resulting schedule will be immediately displayed within the Gantt. By mapping an activity to an employee (resource), he will be enabled to further manage this activity.

From now on, he can enter comments, meetings, as well as other documents and files to this activity, and set the stage of progress until the activity has finished.

Analysis

With various reports, you gain a transparent view on your planning and coordination, tailored to your needs. Traffic light indicators inform you about critical dates and project phases.

Further reports for multiple projects and resources can be built and customized. These reports can analyze any number of MindPlans, no matter in which databases they are located.

Lotus Notes Database

The database of Lotus Notes is used to store the MindPlans. Each node will be saved as an independent record within the database. The Lotus Notes model of distributed data (replication) ensures perfect collaboration, across any number of organizations at any place and at any time!

No Lotus Notes in your company?

Lotus notes acts in the background and is not visible to the MindPlan-User, unless otherwise required. Thus, using the package is possible, even if there is no Lotus Notes infrastructure installed in your company.

We care about the data exchange with your colleagues. Please contact us.

Function-Matrix

MindPlan Version	Standard	User	Professional	View
Editing the MindPlan-Map (Map-Editor)				
- creation and maintenance of new MindPlans	■	■	■	
- display of all MindPlans and navigation	■	■	■	■
- creation of nodes within the Map-Editor	■	■	■	
- creation of shortcuts	■	■	■	
- maintenance of shortcuts to other maps, files, internet, Notes-elements	■	■	■	
- data export to HTML, ASCII, RTF, CSV and XML	■	■	■	
Project- and resource management (Gantt-Editor)				
- creation of MindPlans within the Gantt-Editor		■	■	
- using the Gantt-Editor for maintenance of existing MindPlans of the "User"- and "Professional"-version	■	■	■	
- display and navigation within the Gantt-Editor	■	■	■	■
- data export to Microsoft® MS-Project		■	■	
Editing of nodes (Map- & Gantt-Editor)				
- creation of project phases		■	■	
- creation of individual activities	■	■	■	
- creation of individual milestones		■	■	
- creation of activities & milestones for other persons			■	
- creation of meeting protocols			■	
- maintenance of existing project-maps and nodes, that have been created once by the "User"- or "Professional"-version	■	■	■	
MindPlan reports				
- creation and design of individual reports			■	
- use of existing individual reports, if they have been created using the "Professional"-version	■	■	■	
Document management (Lotus Notes)				
- creation and mapping of notes and documents to other nodes	■	■	■	
- display and navigation in Lotus Notes	■	■	■	■
Collaboration and data distribution				
- common and distributed access to MindPlans	■	■	■	■
- distribution of MindPlans via data replication	■	■	■	■
- locking of nodes for editing	■	■	■	



MindPlan

User Licences	1	10	20	50	100	200	500
MindPlan Standard	55,00 €	45,00 €	40,00 €	35,00 €	30,00 €	25,00 €	20,00 €
Update+	9,90 €	8,10 €	7,20 €	6,30 €	5,40 €	4,50 €	3,60 €
MindPlan User	65,00 €	55,00 €	45,00 €	40,00 €	35,00 €	30,00 €	25,00 €
Update+	11,70 €	9,90 €	8,10 €	7,20 €	6,30 €	5,40 €	4,50 €
MindPlan Professional	75,00 €	65,00 €	55,00 €	45,00 €	40,00 €	35,00 €	30,00 €
Update+	13,50 €	11,70 €	9,90 €	8,10 €	7,20 €	6,30 €	5,40 €
MindPlan View	0,00 €						
Update+	0,00 €						
MindPlan SDK	595,00 €						
Update+	107,10 €						

MindPlan Add On's

MindPlan Sync (Notes)	25,00 €	22,00 €	20,00 €	18,00 €	15,00 €	12,00 €	10,00 €
Update+	4,50 €	3,96 €	3,60 €	3,24 €	2,70 €	2,16 €	1,80 €
MindPlan Calendar	25,00 €	22,00 €	20,00 €	18,00 €	15,00 €	12,00 €	10,00 €
Update+	4,50 €	3,96 €	3,60 €	3,24 €	2,70 €	2,16 €	1,80 €
MindPlan TimeRecord	25,00 €	22,00 €	20,00 €	18,00 €	15,00 €	12,00 €	10,00 €
Update+	4,50 €	3,96 €	3,60 €	3,24 €	2,70 €	2,16 €	1,80 €

Valid: Dec-01 2005

The above mentioned prices are valid solely for schools, colleges, public research-institutes or public and charitable, non-profit organizations respectively.

The scale prices are valid per order and for the selected product, unless there is no outline agreement for a certain contingent of licences. Please contact us for an individual offering.

This pricelist replaces all previous pricelists. The prices are netto plus value-added tax.



■ **MindPlan Sync**

Synchronization of your individual appointments and task database with Weilgut MindPlan.

■ **MindPlan Calendar**

Management of group appointments with calendars of selected employees for use within the comprehensive MindPlan reports.

Using this Module you will never miss a vacation or appointment outside MindPlan.

■ **MindPlan TimeRecording**

Recording of times, expenses as well as project-, revenue- and order-dates related to MindPlans. This ensures financial transparency and a plan/actual comparison between planning and reality.

■ **Company licence**

A company licence comprises unrestricted use of one MindPlan product within a legal person. The price is related to the maximum number of possible users.

Please contact us to receive an individual offer.

■ **Update+**

Update+ is the name of an automated and cost efficient update-service for the MindPlan products offered by Haus Weilgut. This service is valid during one year. Within this timeframe you will receive every major- and minor-release automatically. Normally you will receive one major and 1-2 minor-releases per one year.

The Update+ contract runs at least for one year and starts with the shipment of the licences that are covered by this contract. The contract renews every year for an additional year, unless canceled in a written way 90 days before expiration.

Please refer to the list-prices that are valid at the date of purchase, respectively the date of renewal. Payment is done on a yearly base at the beginning of each period.

■ **MindPlan SDK (Developer Licence)**

MindPlan SDK enables you to create individual adaptations and extensions to the MindPlan applications. It comprises of the required documentation and the design-elements and source-codes needed for that adaption. Notes development skills are prerequisite for using the "Developer Licence".

■ **Hotline**

You can send your requirements, wishes and problems concerning Weilgut MindPlan via E-Mail to support@mindplan.com. This service is free of charge.

Details are described in our Weilgut software maintenance contract, that can be found under www.mindplan.de in the support area.

For telephone support we offer individual hotline- and support-contracts. Alternatively you can access our support team via phone at 130,- Euro per hour (rounded up to the next full quarter).



Contact

Haus Weilgut Computer Conception

Haus Weilgut GmbH
Einsteinstrasse 20
D-76275 Ettlingen

Tel.: +49 (7243) 5466 -0
Fax: +49 (7243) 5466 -66

Email: info@weilgut.de
Web: <http://www.weilgut.de>

